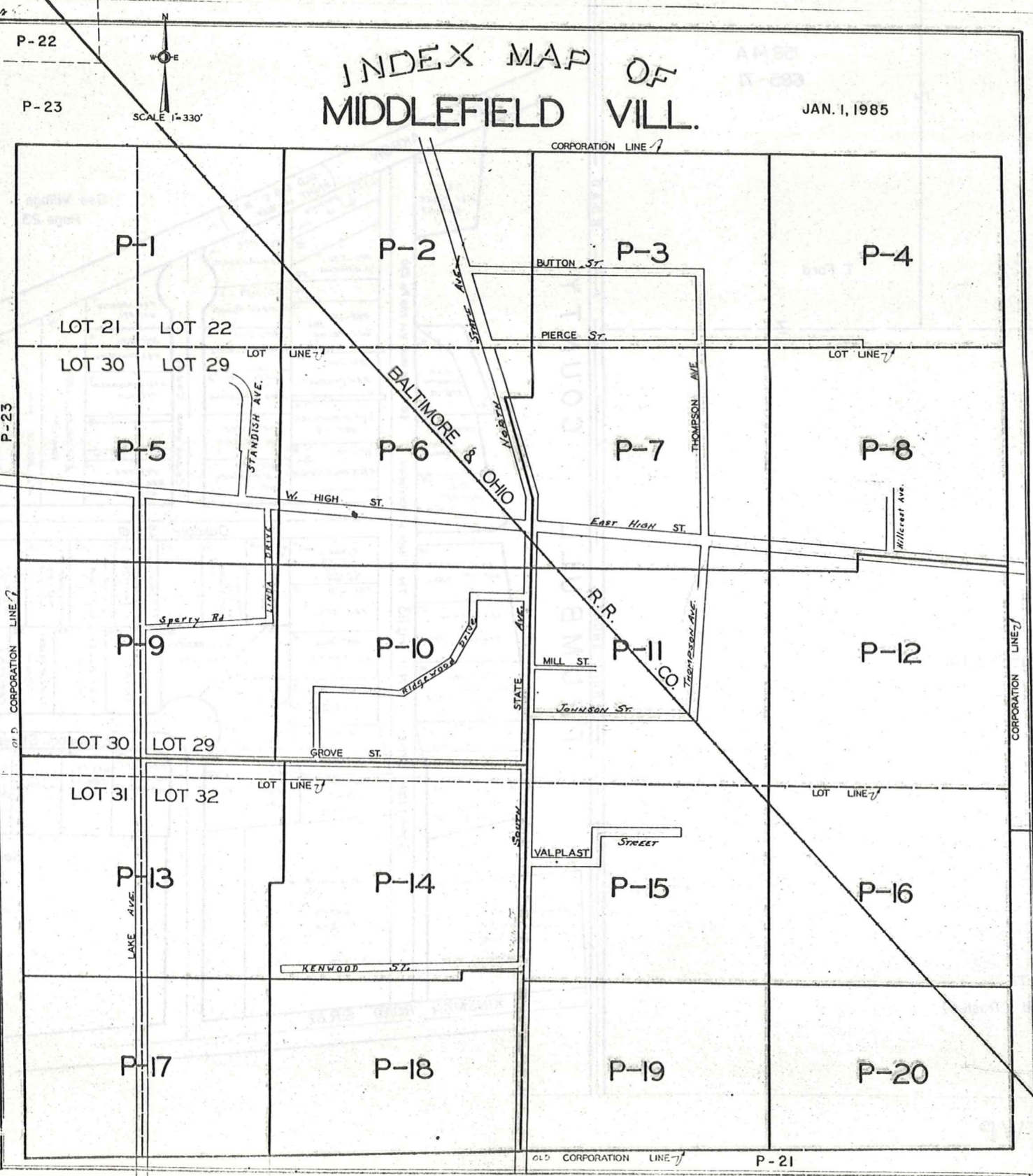


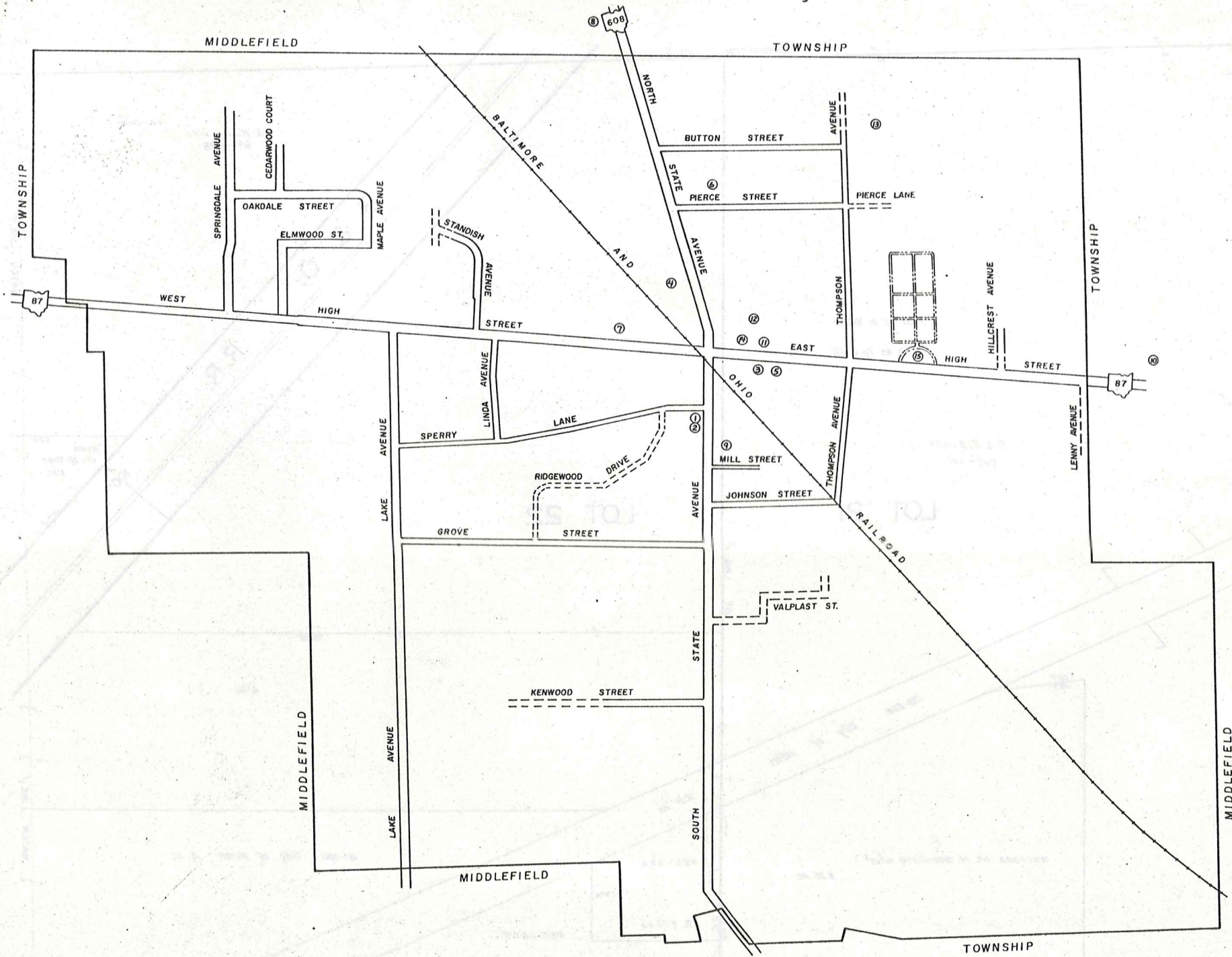
INDEX MAP OF MIDDLEFIELD VILL.

JAN. 1, 1985



MAP OF MIDDLEFIELD VILLAGE

GEAUGA COUNTY, OHIO

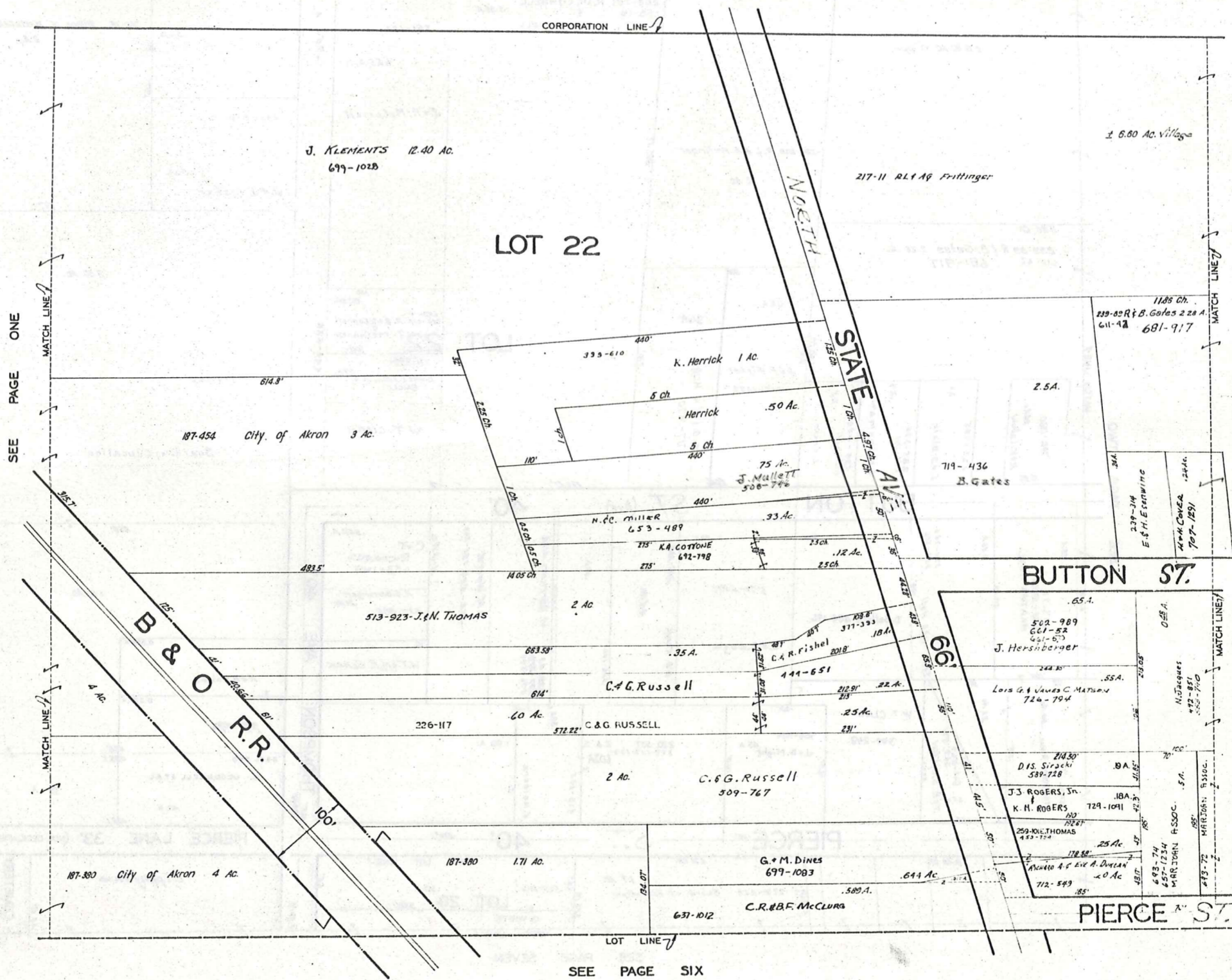


SCALE: 1" = 400'

 ——— DEDICATED ROAD
 - - - - - NON DEDICATED ROAD

- ① MIDDLEFIELD VILL. HALL
- ② MIDDLEFIELD VILL. POLICE DEPT.
- ③ UNITED STATES POST OFFICE
- ④ MIDDLEFIELD VOL. FIRE DEPT.
- ⑤ VETERANS MEMORIAL HOME
- ⑥ BETHESDA NURSING HOME
- ⑦ WESLEYAN METHODIST CHURCH
- ⑧ MIDDLEFIELD REVIVAL CHURCH
- ⑨ FIRST UNITED METHODIST CHURCH
- ⑩ SAINT LUCY CHURCH
- ⑪ CARDINAL JUNIOR HIGH SCHOOL
- ⑫ MIDDLEFIELD ELEM. SCHOOL
- ⑬ CARDINAL HIGH SCHOOL
- ⑭ MIDDLEFIELD BRANCH LIBRARY
- ⑮ MIDDLEFIELD CEMETERY

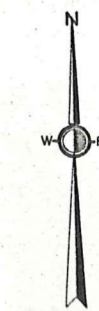
OFFICE OF GEAUGA COUNTY ENGINEER
 CHARDON, OHIO



SEE PAGE ONE

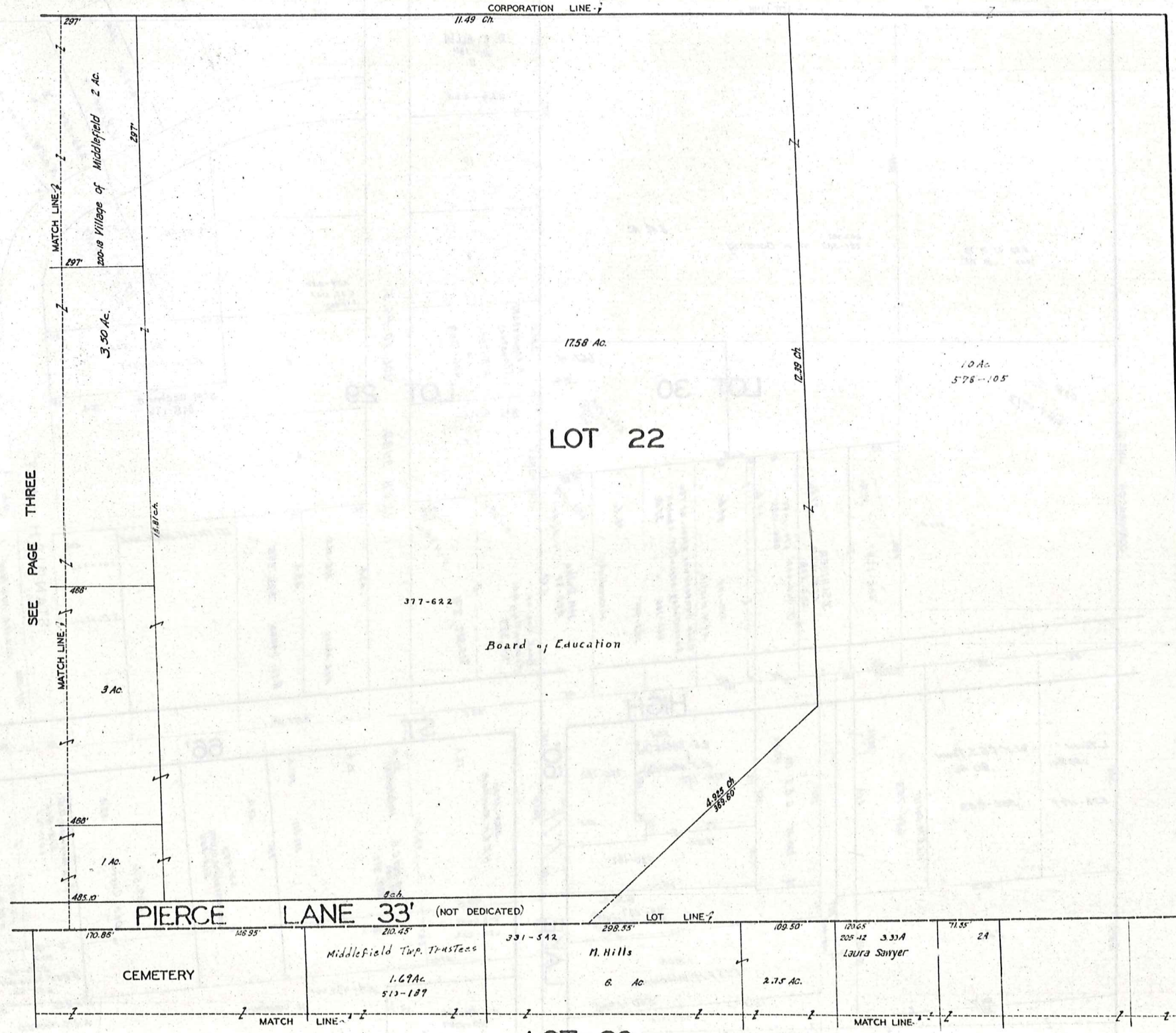
SEE PAGE THREE

SEE PAGE SIX



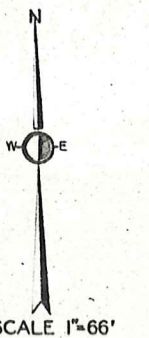
SCALE 1"=66'

JAN. 1, 1985



SEE PAGE THREE

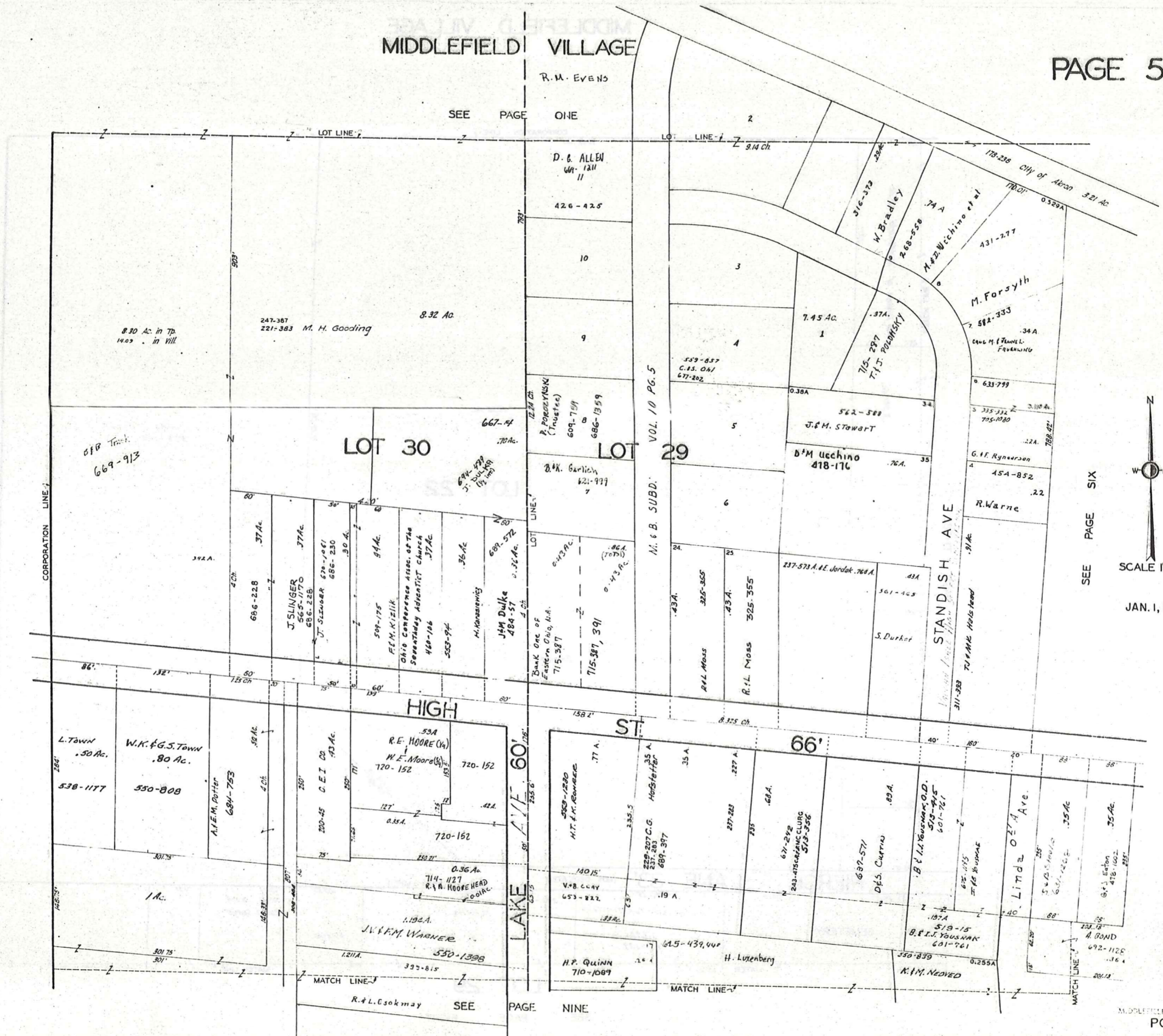
SEE PAGE EIGHT

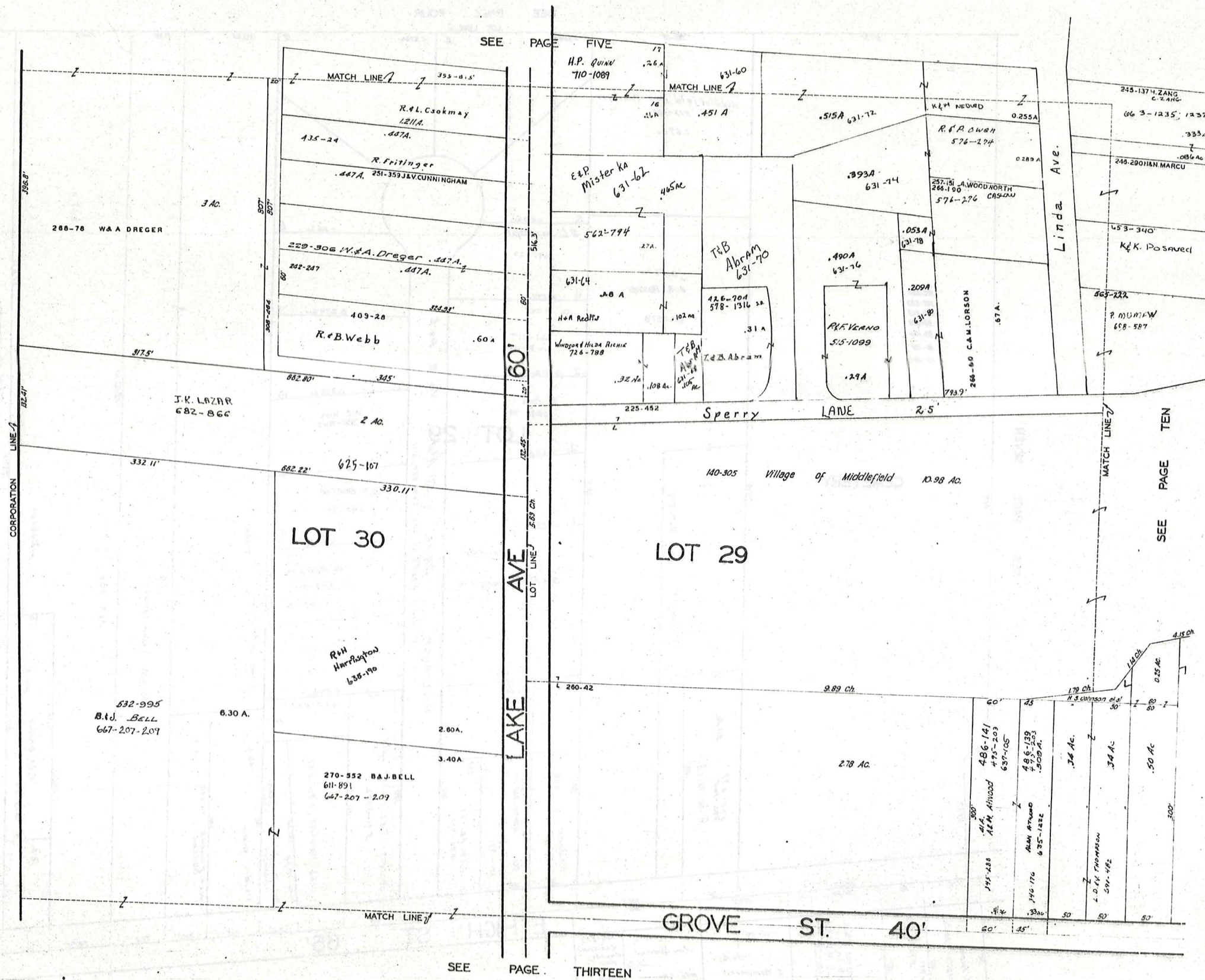


JAN. 1, 1985

MIDDLEFIELD VILLAGE

R.M. EVENS
SEE PAGE ONE

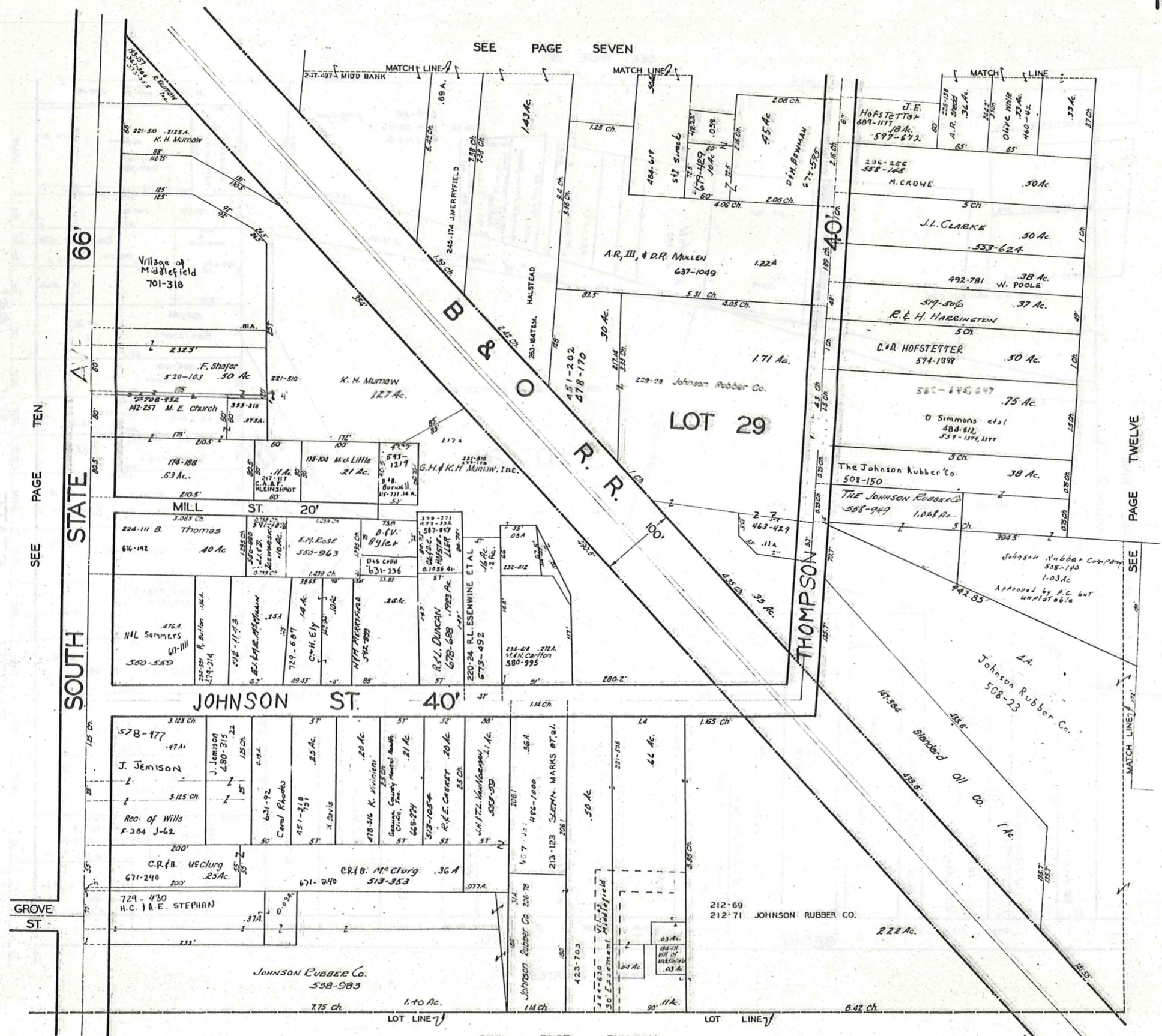




SEE PAGE TEN
 SEE PAGE THIRTEEN
 SCALE 1"=66'
 JAN. 1, 1985

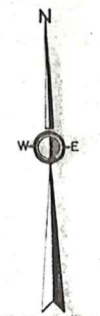
MIDDLEFIELD VILLAGE

PAGE 10



SEE PAGE TEN

SEE PAGE TWELVE



SCALE 1"=66'

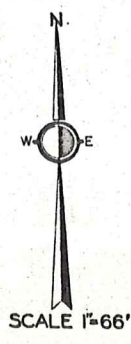
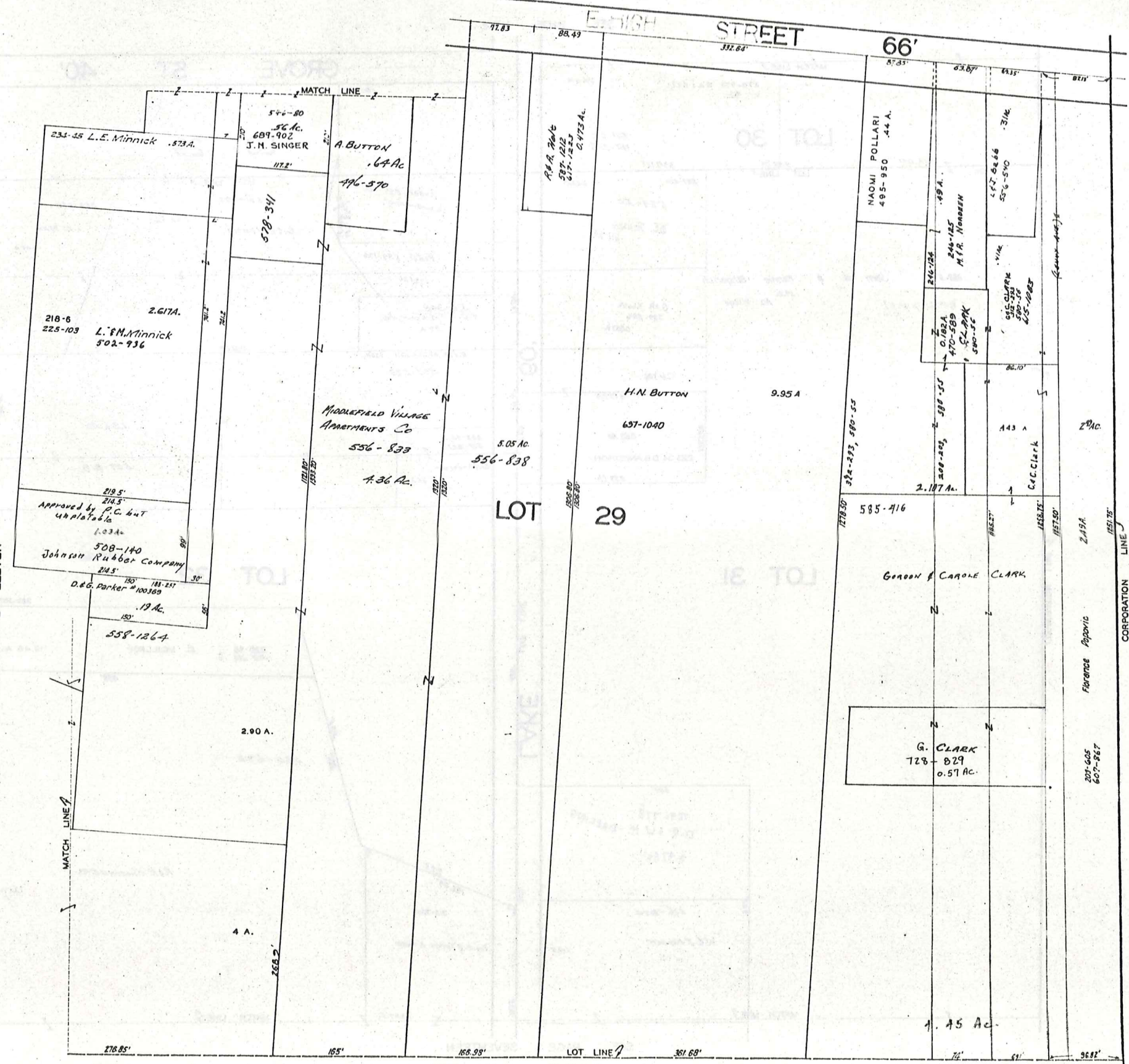
JAN. 1, 1985

SEE PAGE FIFTEEN

SEE PAGE EIGHT

SEE PAGE ELEVEN

SEE PAGE SIXTEEN

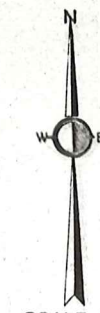
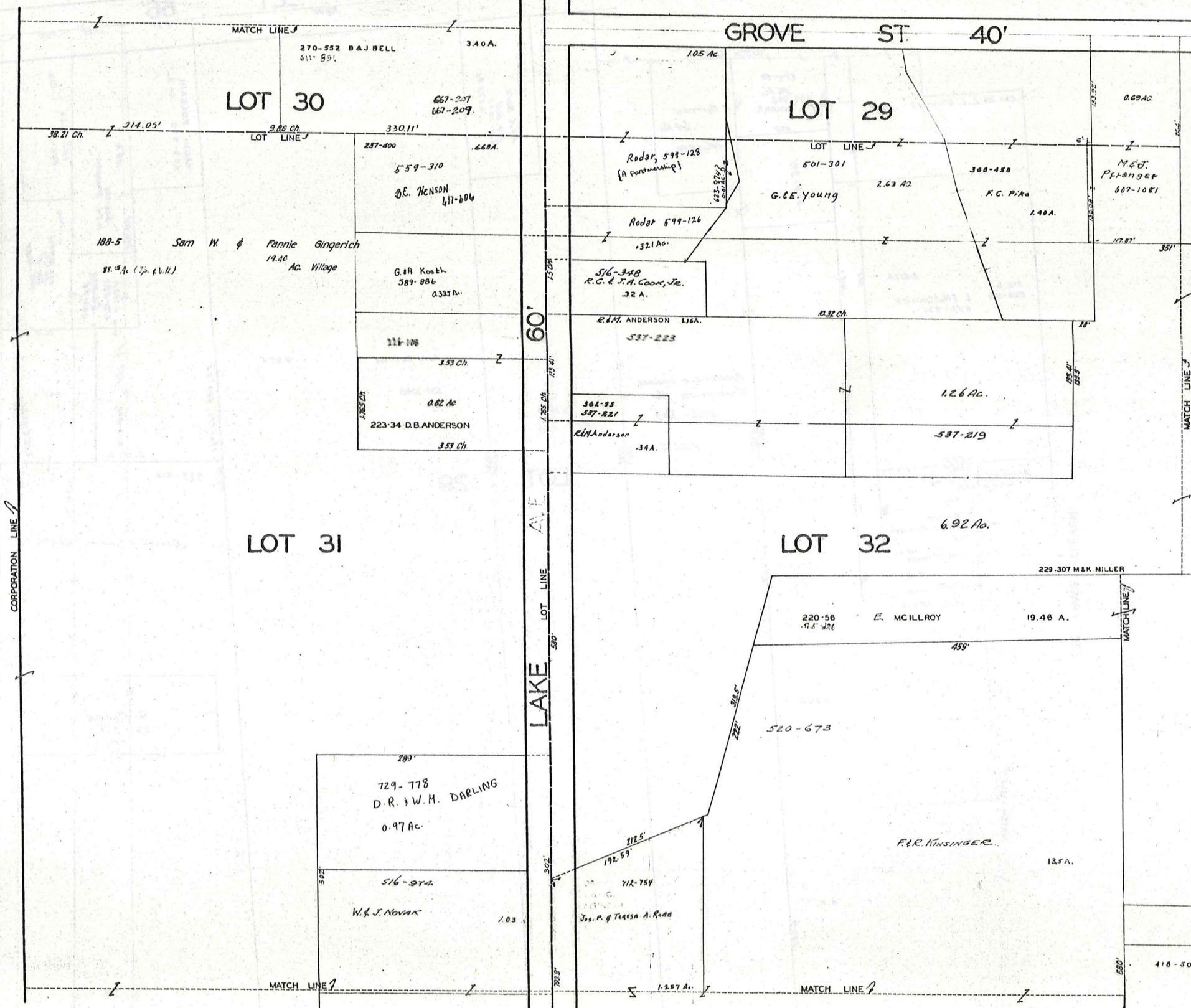


JAN. 1, 1985

287

MIDDLEFIELD VILLAGE

SEE PAGE NINE



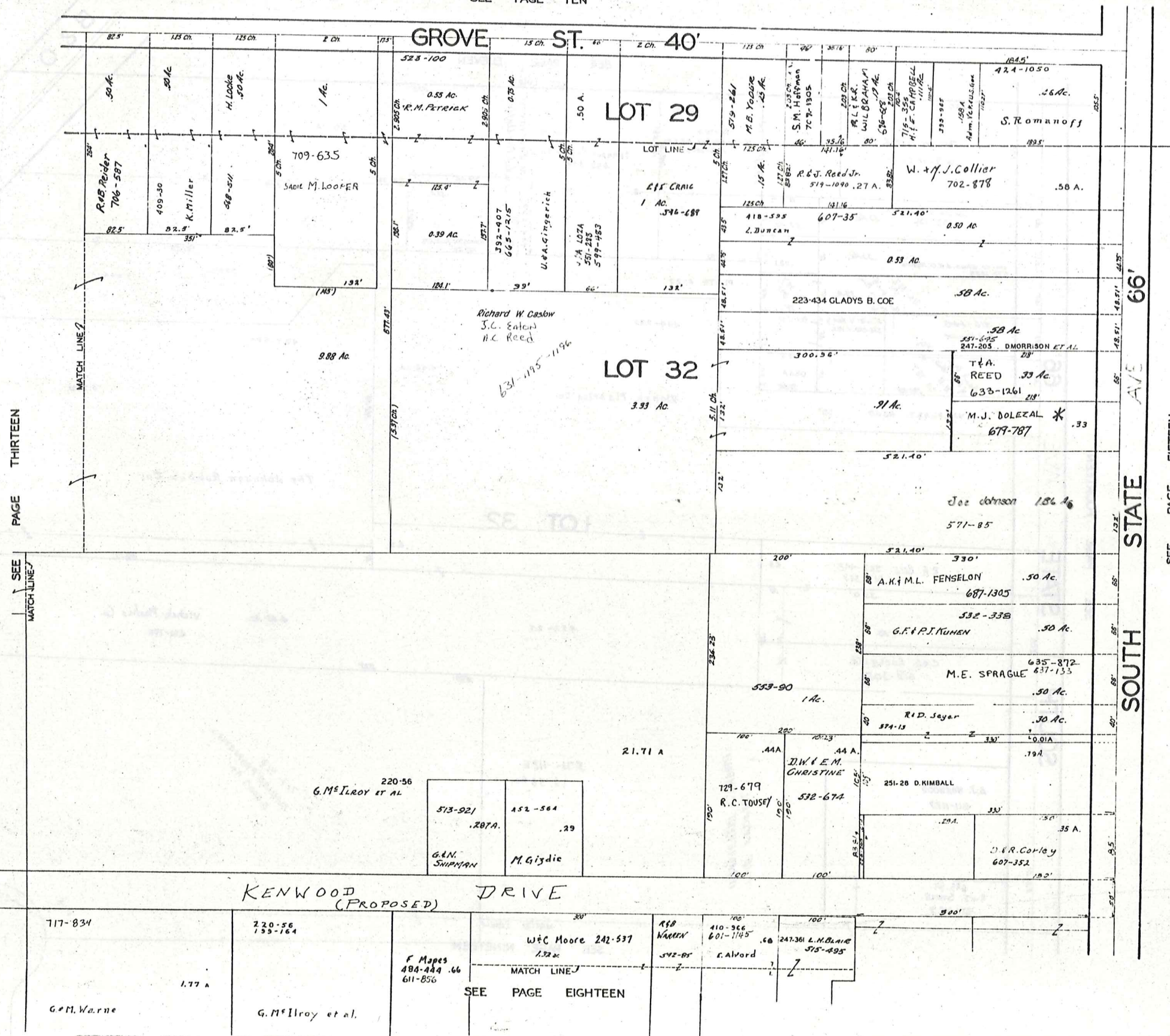
SCALE 1"=66'

JAN. 1, 1985

SEE PAGE FOURTEEN

SEE PAGE SEVENTEEN

SEE PAGE TEN



PAGE THIRTEEN

SEE MATCH LINE

STATE AVE 66'

SEE PAGE FIFTEEN

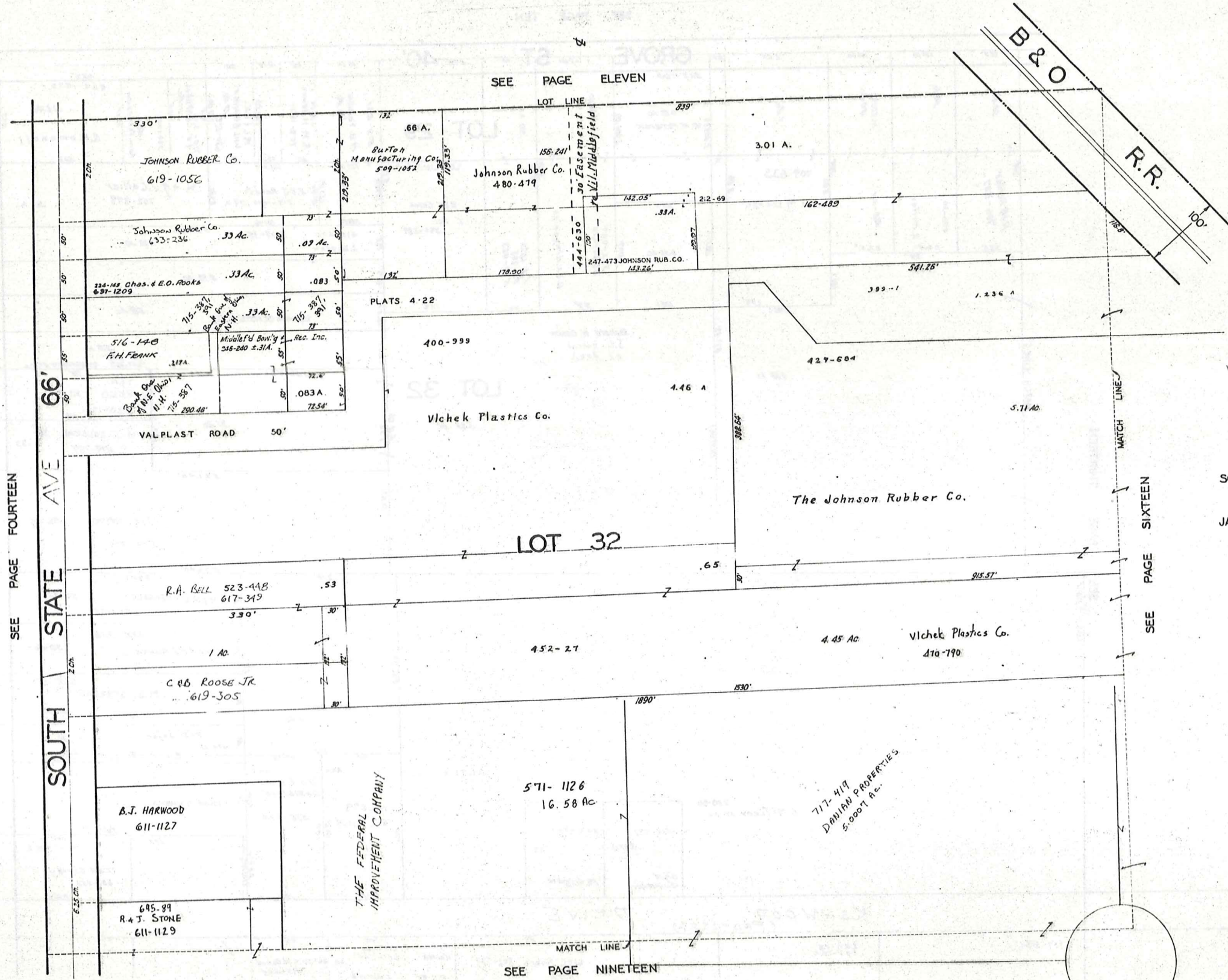


SCALE 1"=66'

JAN. 1, 1985

SEE PAGE EIGHTEEN

MIDDLEFIELD VILLAGE



N
 SCALE 1"=66'
 JAN. 1, 1985

SEE PAGE FOURTEEN

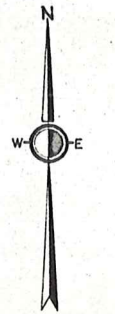
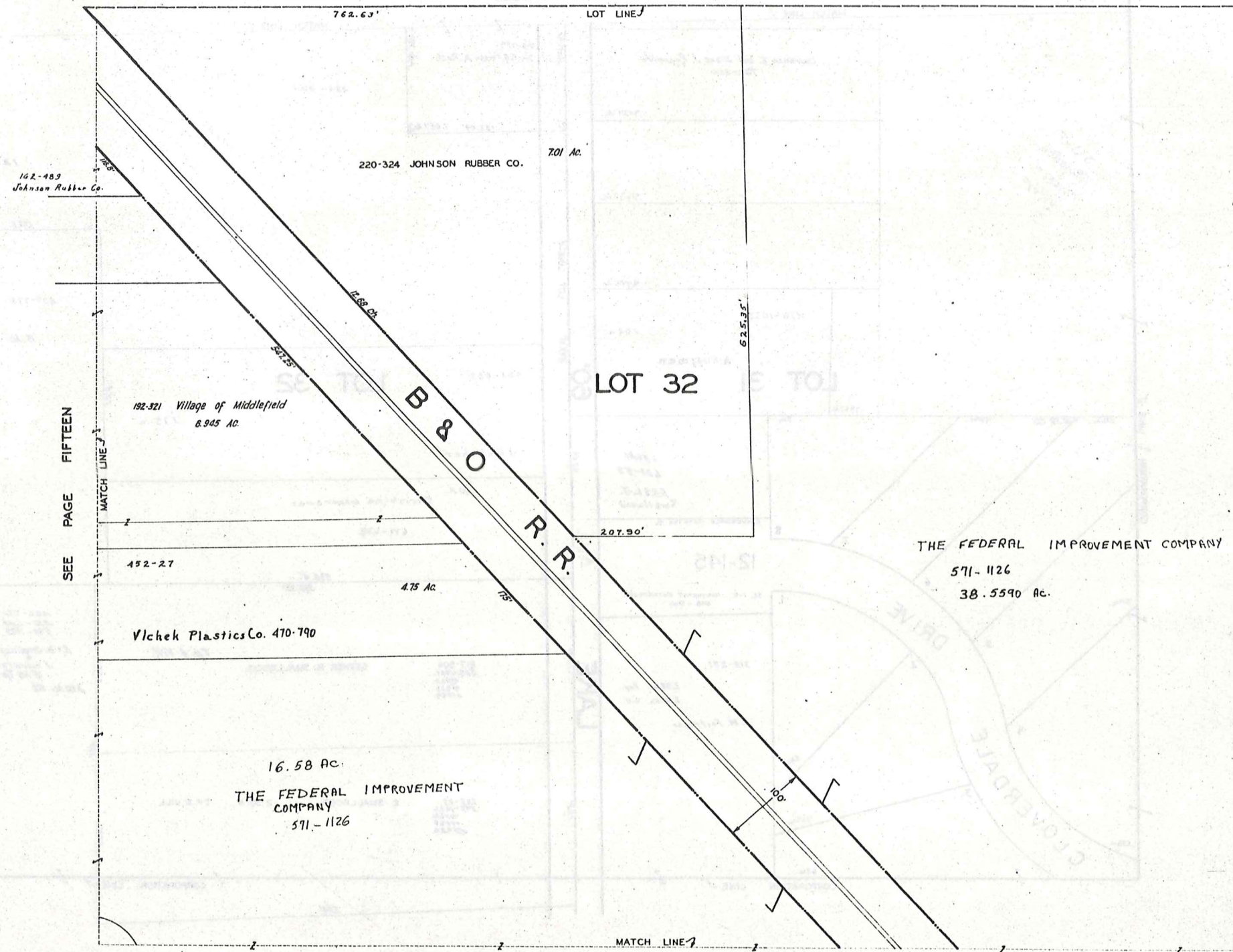
SOUTH STATE AVE 66'

SEE PAGE ELEVEN

SEE PAGE SIXTEEN

SEE PAGE NINETEEN

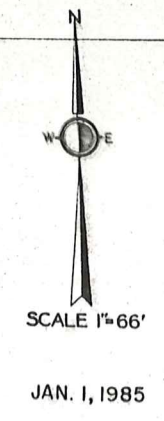
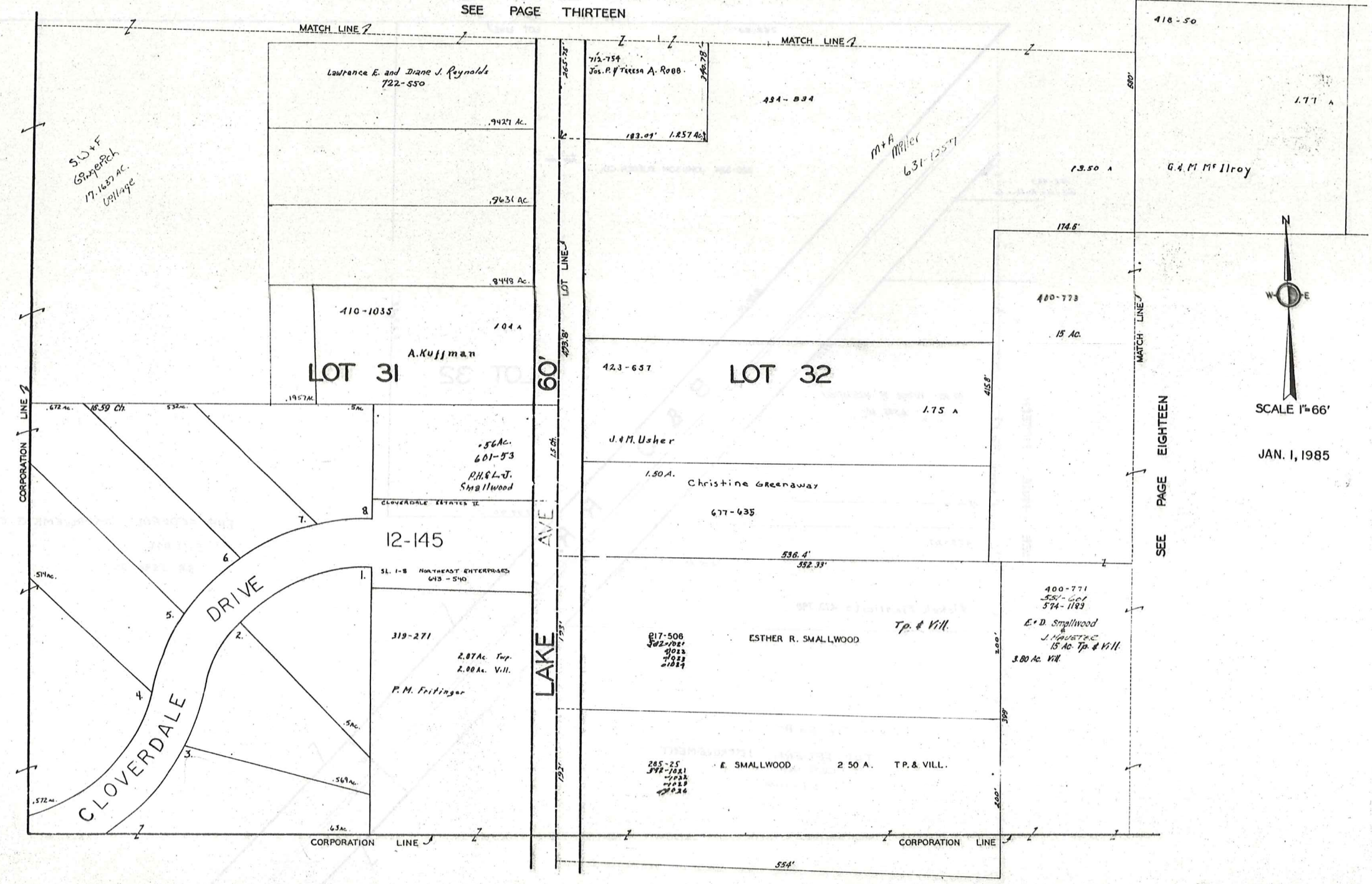
SEE PAGE TWELVE



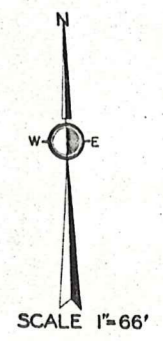
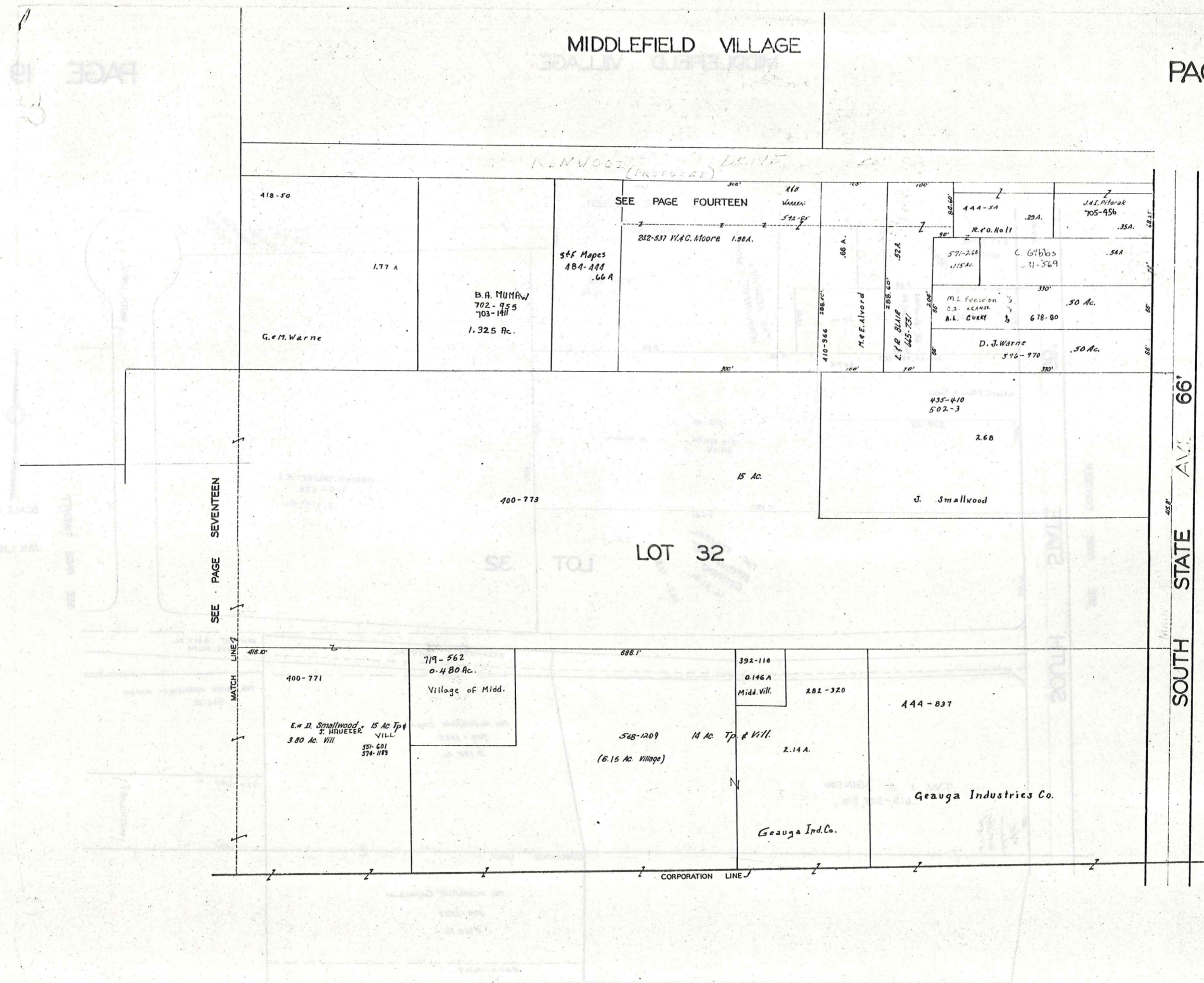
SCALE 1"=66'

JAN. 1, 1985

SEE PAGE THIRTEEN



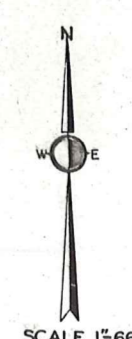
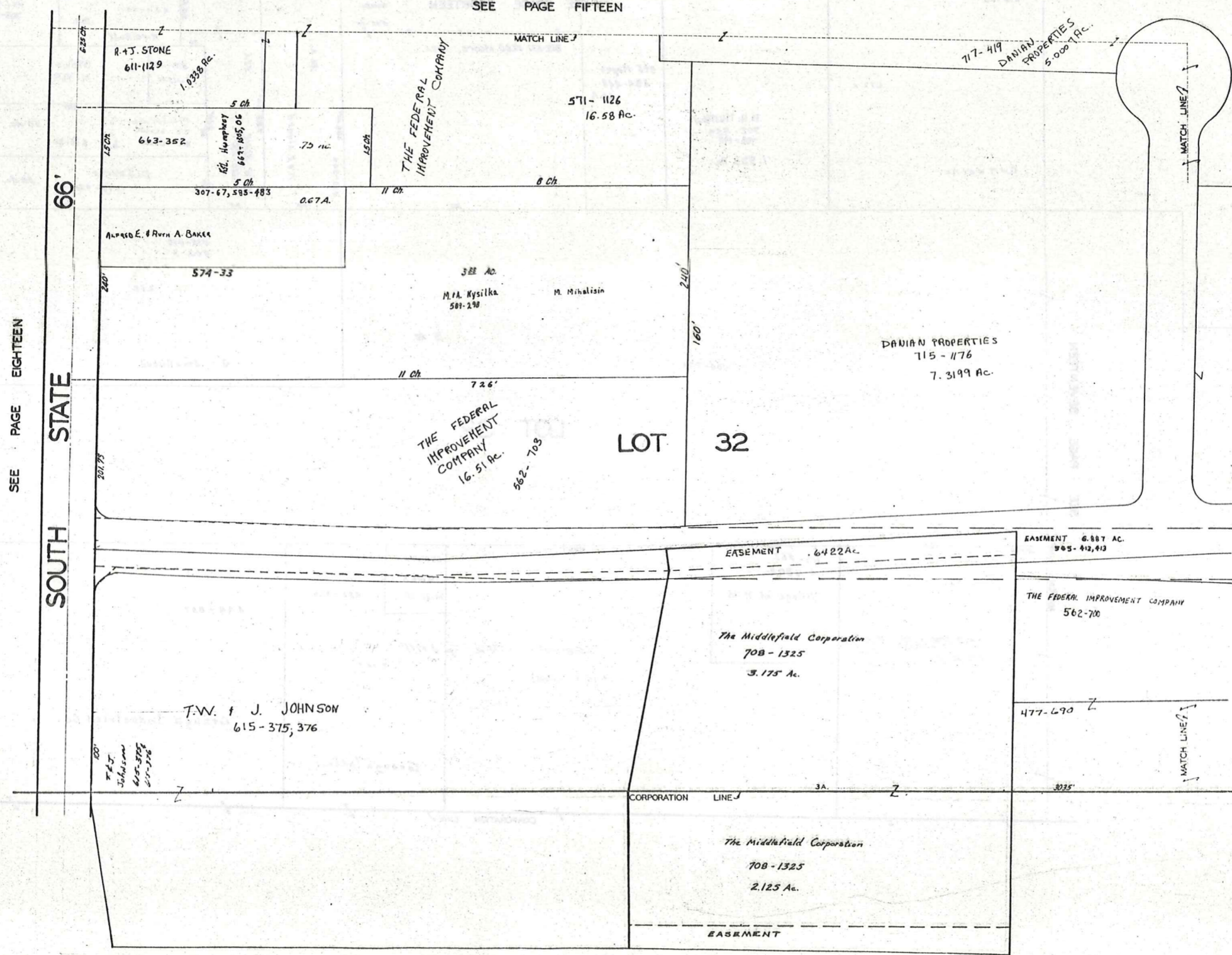
SEE PAGE EIGHTEEN



JAN. 1, 1985

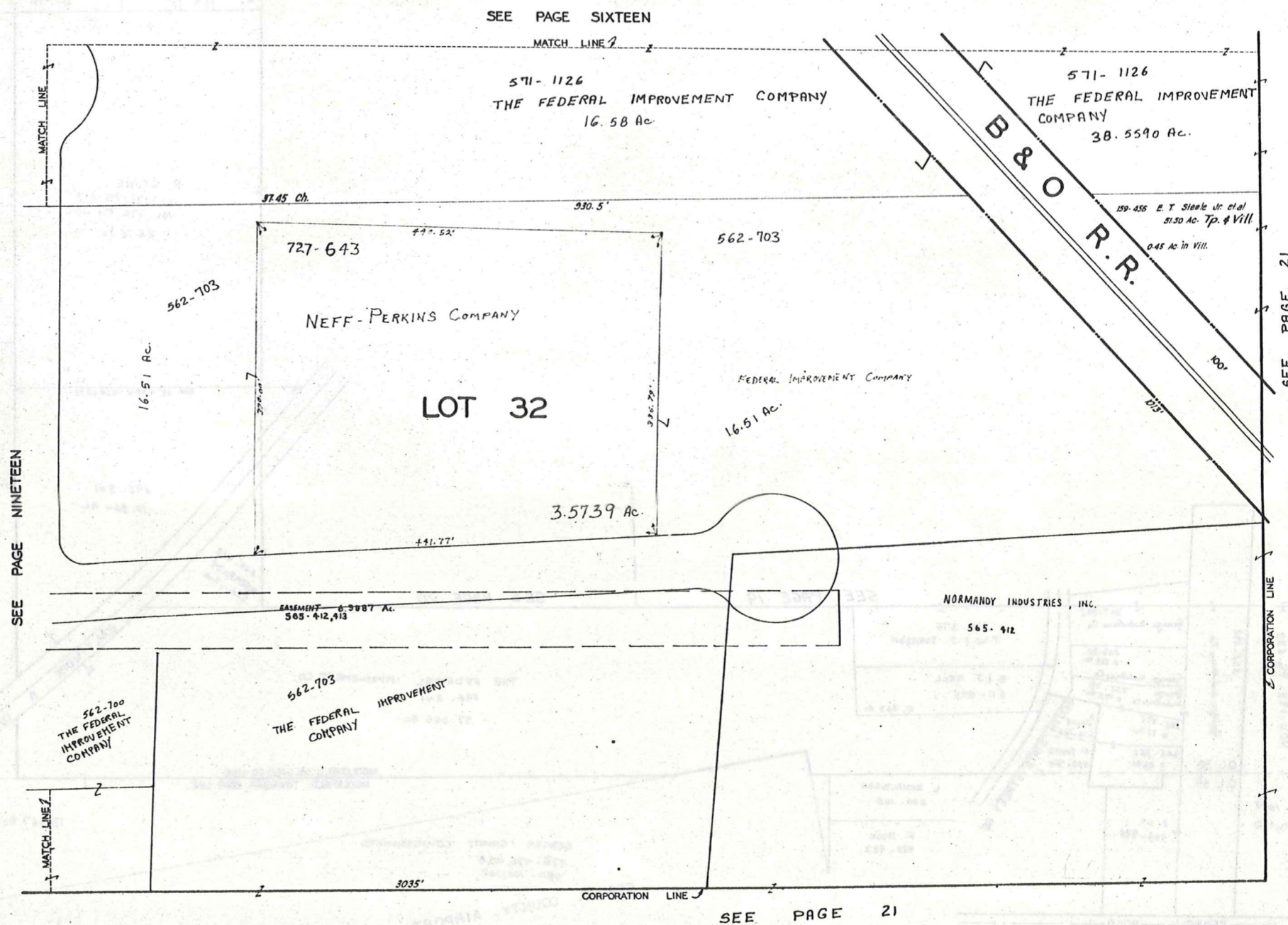
SEE PAGE SEVENTEEN
SOUTH STATE AVE 66'
SEE PAGE NINETEEN

SEE PAGE FIFTEEN



SCALE 1"=66'

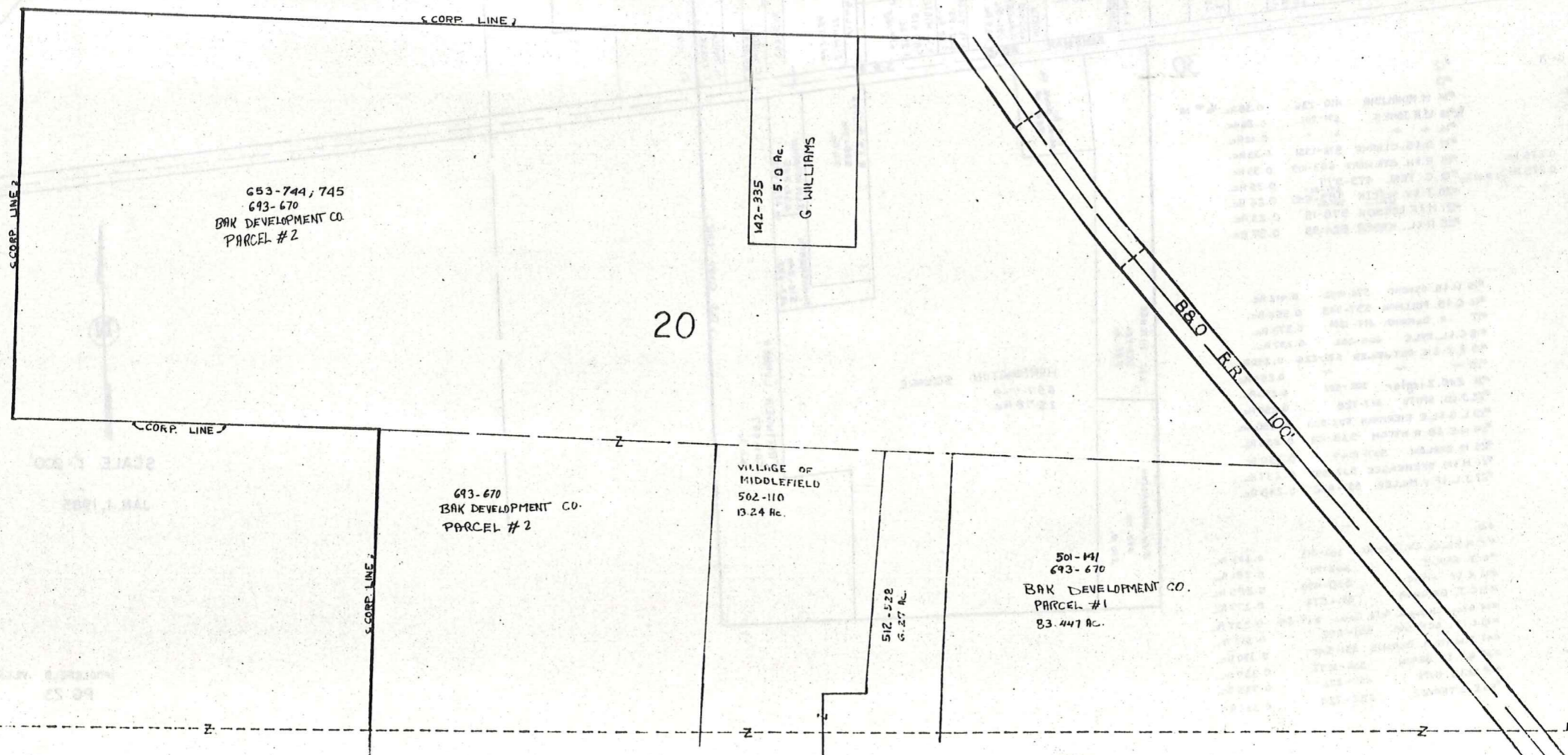
JAN. 1, 1985



SCALE 1"=66'

JAN. 1, 1985

MIDDLEFIELD VILLAGE

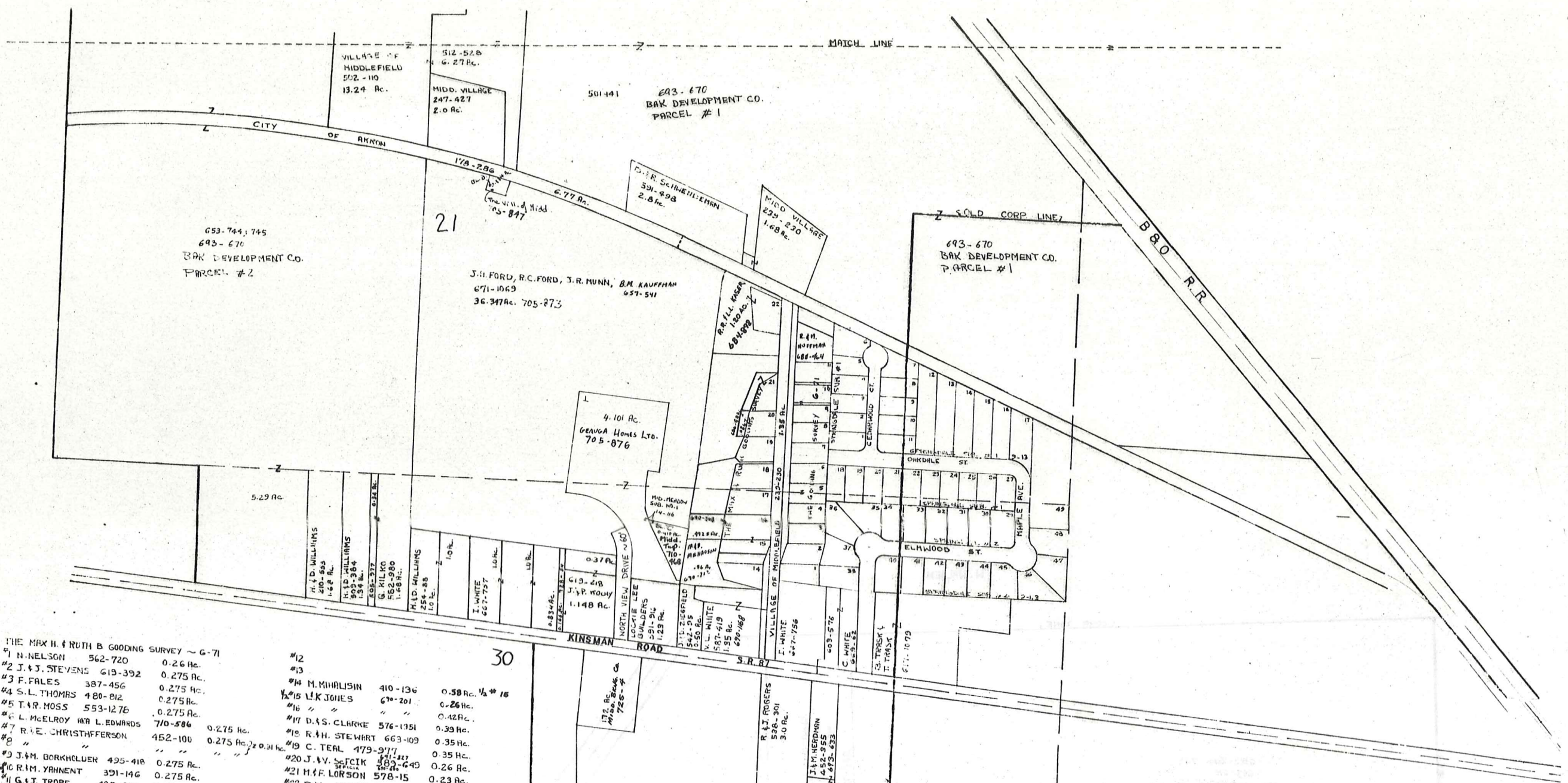


W. WALDEN



SCALE 1"=200'
JAN. 1, 1985

MIDDLEFIELD VILLAGE
PG. 22



THE MAX H. & RUTH B. GOODING SURVEY ~ G-71

| | | |
|-----------------------------|----------|-----------|
| #1 N. NELSON | 562-720 | 0.26 Ac. |
| #2 J. & J. STEVENS | 619-392 | 0.275 Ac. |
| #3 F. FALES | 387-456 | 0.275 Ac. |
| #4 S. L. THOMAS | 480-812 | 0.275 Ac. |
| #5 T. R. MOSS | 553-1276 | 0.275 Ac. |
| #6 L. McELROY W. L. EDWARDS | 710-586 | 0.275 Ac. |
| #7 R. E. CHRISTOFFERSON | 452-100 | 0.275 Ac. |
| #8 | | |
| #9 J. M. BORKHOLTER | 495-418 | 0.275 Ac. |
| #10 R. M. YARNENT | 391-146 | 0.275 Ac. |
| #11 G. J. TROFF | 495-250 | 0.275 Ac. |

SPRINGDALE SUBDIVISION NO. 1 & NO. 2

| | | |
|-------------------------|----------|-----------|
| #1 D. M. Parton | 705-121 | 0.247 Ac. |
| #2 K. QUILLEN | 550-892 | 0.25 Ac. |
| #3 C. H. P. L. WISEMAN | 537-644 | 0.25 Ac. |
| #4 J. M. & M. A. LEWIS | 550-505 | 0.235 Ac. |
| #5 G. W. & B. J. WILKES | 537-639 | 0.235 Ac. |
| #6 C. & N. LANGHAM | 562-906 | 0.293 Ac. |
| #7 F. & K. NICHOLS | 611-471 | 0.247 Ac. |
| #8 T. L. WILLIAMS | 591-872 | 0.250 Ac. |
| #9 H. D. BARCIKOWSKI | 537-924 | 0.250 Ac. |
| #10 | | |
| #11 R. E. STEWART | 593-782 | 0.247 Ac. |
| #12 E. E. SELBY | 484-600 | 0.580 Ac. |
| #13 M. E. BRILLA | 485-54 | 0.524 Ac. |
| #14 W. B. OSMOND | 576-1033 | 0.463 Ac. |

| | | |
|--------------------------|----------|-----------|
| #29 G. L. BARRIS | 657-893 | 0.332 Ac. |
| #30 Nancy L. SHANNON | 727-674 | 0.283 Ac. |
| #31 J. BALASZ | 553-1335 | 0.283 Ac. |
| #32 T. L. & V. McHENNEY | 531-201 | 0.283 Ac. |
| #33 W. K. BLUE | 591-1090 | 0.283 Ac. |
| #34 R. D. KLEPPEN | 593-722 | 0.282 Ac. |
| #35 K. E. FERRI | 551-256 | 0.335 Ac. |
| #36 B. MAZZONE | 551-181 | 0.362 Ac. |
| #37 D. A. & C. A. WATSON | 553-298 | 0.333 Ac. |
| #38 A. S. PATRICK | 661-337 | 0.333 Ac. |

| | | |
|---------------------|----------|-------------------|
| #12 | | |
| #13 | | |
| #14 M. MAHALJIN | 410-136 | 0.58 Ac. 1/2 # 16 |
| #15 L. K. JONES | 670-201 | 0.26 Ac. |
| #16 | | 0.42 Ac. |
| #17 D. A. S. CLARKE | 576-1351 | 0.39 Ac. |
| #18 R. H. STEWART | 663-109 | 0.35 Ac. |
| #19 C. TEAL | 479-917 | 0.35 Ac. |
| #20 J. V. SFCIK | 550-649 | 0.26 Ac. |
| #21 H. F. LORSON | 578-15 | 0.23 Ac. |
| #22 R. V. L. KASER | 524-33 | 0.37 Ac. |

| | | |
|----------------------------|----------|-----------|
| #15 W. B. OSMOND | 576-1092 | 0.412 Ac. |
| #16 C. S. FULLMAN | 537-745 | 0.356 Ac. |
| #17 R. DeMARCO | 493-1266 | 0.373 Ac. |
| #18 C. L. PYLE | 665-302 | 0.237 Ac. |
| #19 R. J. & M. DETWEILER | 582-226 | 0.250 Ac. |
| #20 | | |
| #21 E. C. Ziegler | 702-551 | 0.250 Ac. |
| #22 J. D. SMITH | 617-728 | 0.250 Ac. |
| #23 L. G. & L. E. EIERMANN | 533-903 | 0.250 Ac. |
| #24 W. E. & B. R. HATCH | 538-109 | 0.250 Ac. |
| #25 M. BARLOW | 537-1047 | 0.250 Ac. |
| #26 M. M. PFENEGEE | 537-1097 | 0.237 Ac. |
| #27 J. L. & V. MILLER | 537-632 | 0.249 Ac. |

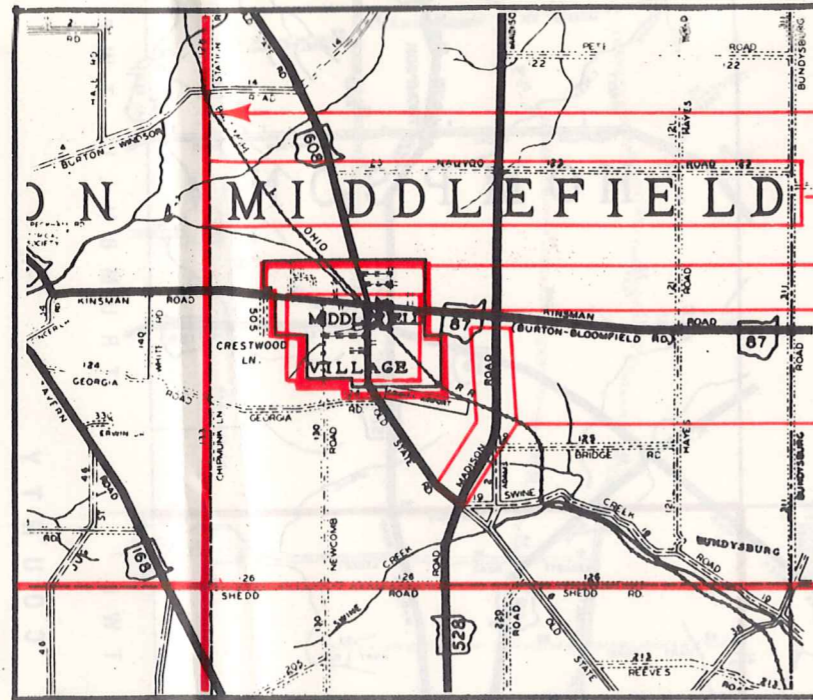
| | | |
|----------------------------|----------|-----------|
| #30 | | |
| #31 W. R. & M. CARTER | 582-913 | 0.333 Ac. |
| #32 J. BRUCE | 663-711 | 0.281 Ac. |
| #33 R. P. FISHEL | 590-490 | 0.280 Ac. |
| #34 C. J. BRUSHAM | 551-574 | 0.279 Ac. |
| #35 R. G. & M. G. McHENNEY | 617-691 | 0.237 Ac. |
| #36 L. T. SCRIGGS | 551-672 | 0.332 Ac. |
| #37 J. W. & M. BLASINS | 551-540 | 0.350 Ac. |
| #38 R. A. & A. BRAUN | 556-1077 | 0.357 Ac. |
| #39 W. D. HUPP | 657-292 | 0.335 Ac. |
| #40 E. M. TROYER | 552-724 | 0.332 Ac. |

SCALE 1" = 200'
JAN. 1, 1985



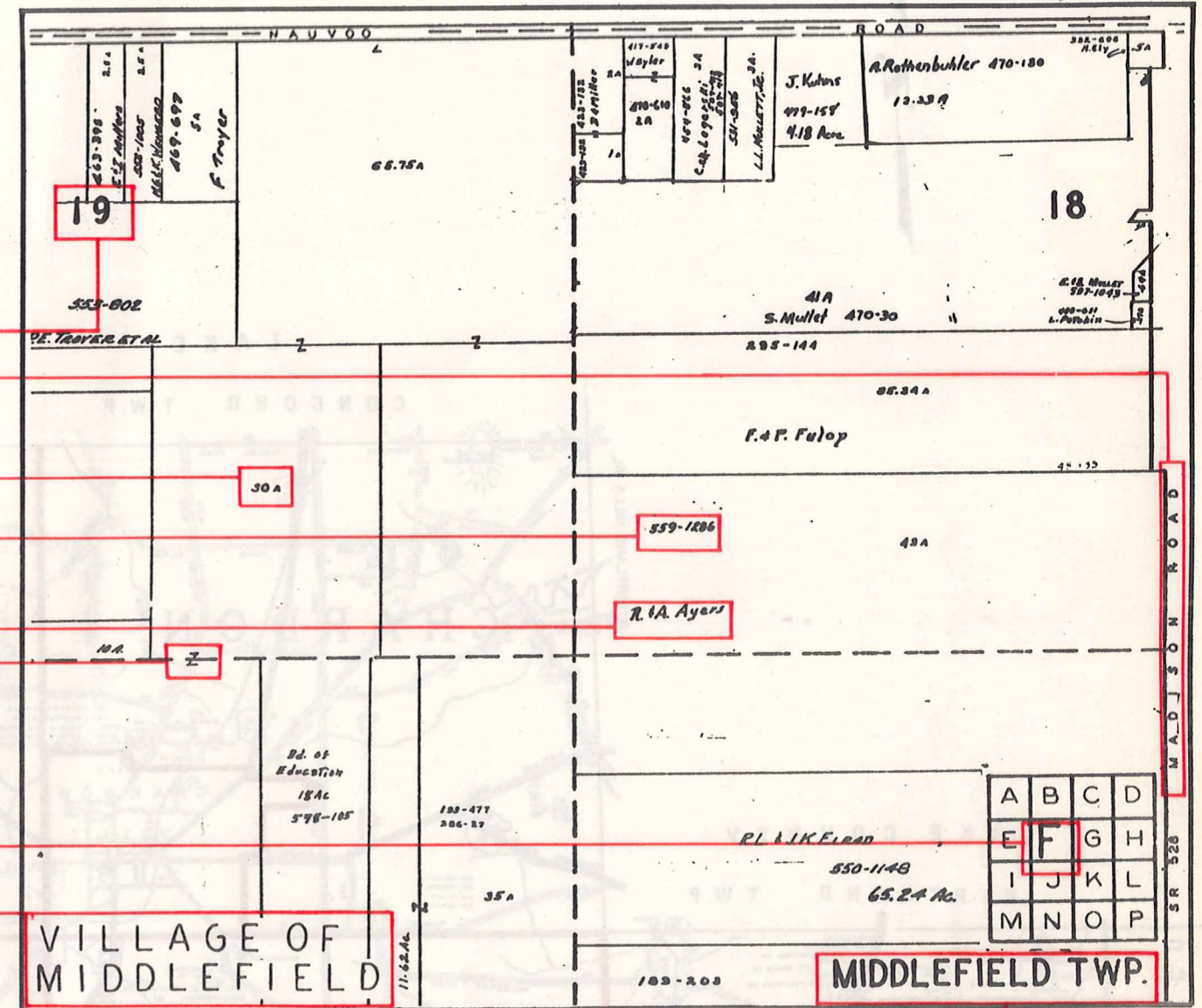
Explanation and Use Sheet for Geauga County, Ohio

SAMPLE (PARTIAL) COUNTY INDEX MAP



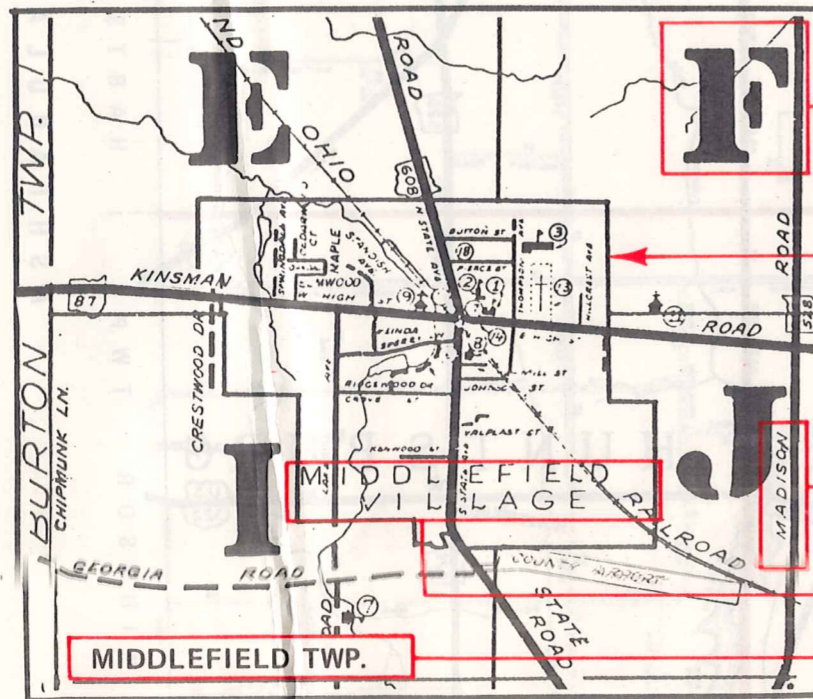
- Township Boundary
- Township Name
- Village Boundary
- Village Name
- Tract Lot Number
- Street Name
- Acreage
- Deed Book & Page
- Owners Name
- Denotes Continous Ownership

SAMPLE (PARTIAL) MAP PAGE



- Map Page Number
- Village Name
- Village Boundary
- Township Name

SAMPLE (PARTIAL) MUNICIPALITY INDEX MAP



- Street Name
- Village Name
- Township Name

USE OF THE MAP VOLUME

1. LOCATE THE GENERAL AREA OF INTEREST ON THE COUNTY INDEX MAP, ATLAS PAGE 'B', AND NOTE THE MUNICIPALITY NAME (TOWNSHIP OR VILLAGE).
2. REFER TO THE TABLE OF CONTENTS, ATLAS PAGE 'C', AND NOTE THE BEGINNING ATLAS PAGE NUMBER FOR THE MUNICIPALITY OF INTEREST.
3. TURN TO THE PAGE INDICATED. ON THIS PAGE WILL APPEAR AN INDEX MAP FOR THAT MUNICIPALITY.
4. LOCATE THE GENERAL AREA OF INTEREST AND NOTE THE MAP PAGE NUMBER. THIS MAY BE EITHER A LETTER OR A NUMBER.
5. MAP PAGES ARE IN ALPHABETICAL (OR NUMERICAL) SEQUENCE FOLLOWING THE MUNICIPALITY INDEX MAP. FOLLOW SEQUENCE TO THE MAP PAGE INDICATED.
6. LOCATE SPECIFIC PARCEL OF INTEREST AND NOTE THE DESIRED INFORMATION.

NOTE: ON SOME MAPS YOU MAY BE REFERRED TO A DETAIL SHEET SHOWING AN ENLARGEMENT OF THE AREA. THESE MAPS ARE FOUND AT THE END OF THE REGULAR MAP PAGES IN EACH MUNICIPALITY IN EITHER ALPHABETICAL OR NUMERICAL SEQUENCE.

NOTE: CHARDON VILLAGE HAS TITLE SHEETS. TO LOCATE OWNERS NAME, NOTE THE PARCEL NUMBER, REFER TO THE TITLE PAGE FOLLOWING THE MAP OF INTEREST, FOLLOW NUMERICAL SEQUENCE TO THE PARCEL NUMBER OF INTEREST AND NOTE THE DESIRED INFORMATION. IN ALL OTHER MUNICIPALITIES THE OWNERS NAME APPEARS ON THE MAP PAGE.

This book is the property of REAL ESTATE DATA, INC. and is distributed by REDI under a leasing arrangement requiring return to REDI upon termination of the lease. REDI reserves the right to reclaim this book if found in the possession of any firm or person where possession was obtained through any unauthorized source.